



HLMR Disk Bearing

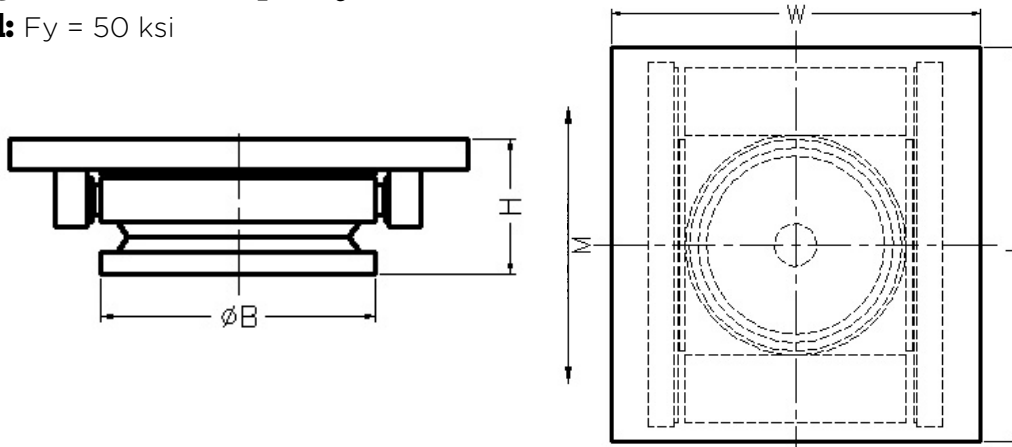
Unidirectional

Design Code: AASHTO 17th Edition Standard and/or LRFD Service Limit.

Rotation: ±0.02 Radians

Design Horizontal Capacity: 30% of Vertical Load Capacity

Steel: $F_y = 50$ ksi



| Model Number | Vertical Load Capacity (Kips) | Horizontal Load Capacity (Kips) | Length L (inches) | Width W (inches) | Base B (inches) | Height H (inches) | Movement M (inches) |
|--------------|-------------------------------|---------------------------------|-------------------|------------------|-----------------|-------------------|---------------------|
| DB100U | 100 | 30 | 13.83 | 10.38 | 6.63 | 3.32 | 4.00 |
| DB200U | 200 | 60 | 17.50 | 14.38 | 8.63 | 3.95 | 4.00 |
| DB300U | 300 | 90 | 20.17 | 16.88 | 10.75 | 4.70 | 4.00 |
| DB400U | 400 | 120 | 22.67 | 19.75 | 12.25 | 5.45 | 4.00 |
| DB500U | 500 | 150 | 24.67 | 21.00 | 13.50 | 5.83 | 4.00 |
| DB600U | 600 | 180 | 26.50 | 23.63 | 14.75 | 6.32 | 4.00 |
| DB700U | 700 | 210 | 28.33 | 24.75 | 16.13 | 6.83 | 4.00 |
| DB800U | 800 | 140 | 29.83 | 27.00 | 17.25 | 7.70 | 4.00 |
| DB900U | 900 | 170 | 31.33 | 29.13 | 18.38 | 8.20 | 4.00 |
| DB1000U | 1000 | 300 | 33.00 | 30.13 | 19.13 | 8.45 | 4.00 |
| DB1100U | 1100 | 330 | 34.17 | 30.75 | 20.13 | 8.70 | 4.00 |
| DB1200U | 1200 | 360 | 35.50 | 32.75 | 21.00 | 9.36 | 4.00 |
| DB1300U | 1300 | 390 | 37.00 | 34.38 | 21.75 | 9.61 | 4.00 |
| DB1400U | 1400 | 420 | 38.00 | 35.63 | 22.63 | 9.86 | 4.00 |
| DB1500U | 1500 | 450 | 39.33 | 37.13 | 23.13 | 9.98 | 4.00 |
| DB1600U | 1600 | 480 | 40.67 | 38.25 | 24.00 | 10.29 | 4.00 |
| DB1700U | 1700 | 510 | 41.17 | 38.00 | 24.88 | 10.61 | 4.00 |
| DB1800U | 1800 | 540 | 42.33 | 39.88 | 25.38 | 11.23 | 4.00 |
| DB1900U | 1900 | 570 | 43.33 | 40.63 | 26.25 | 11.61 | 4.00 |
| DB2000U | 2000 | 600 | 44.50 | 42.00 | 26.75 | 11.61 | 4.00 |
| DB2500U | 2500 | 750 | 48.67 | 46.88 | 29.63 | 12.23 | 4.00 |
| DB3000U | 3000 | 900 | 53.00 | 51.38 | 32.38 | 13.23 | 4.00 |
| DB3500U | 3500 | 1050 | 57.00 | 54.38 | 35.00 | 14.23 | 4.00 |
| DB4000U | 4000 | 1200 | 61.00 | 57.38 | 37.50 | 14.73 | 4.00 |
| DB4500U | 4500 | 1350 | 63.83 | 59.50 | 39.88 | 15.98 | 4.00 |
| DB5000U | 5000 | 1500 | 67.33 | 63.63 | 41.88 | 16.86 | 4.00 |

- Design loads are Service loads. Contact RJW design team for bearing dimensions according to other design codes, i.e., AREMA, CAN/CSA, etc. (www.rjwatson.com/services/design-services)
- Bearing top plate can be used as the sole plate. Sole plate is designed for a welded connection to a steel girder flange or embed plate. Sole plate dimensions may vary for a bolted connection.
- Bearing dimensions are based on zero skew. Top and bottom bearing elements can be oriented at different skew angles to suit varying structure conditions.
- Design movement is the total and includes an additional +/- 1 inch for construction tolerances. Adjust slide plate dimension L if more/less movement is required.
- Masonry plate is not included. Contact RJW design team for masonry plate design assistance.