



HLMR Disk Bearing

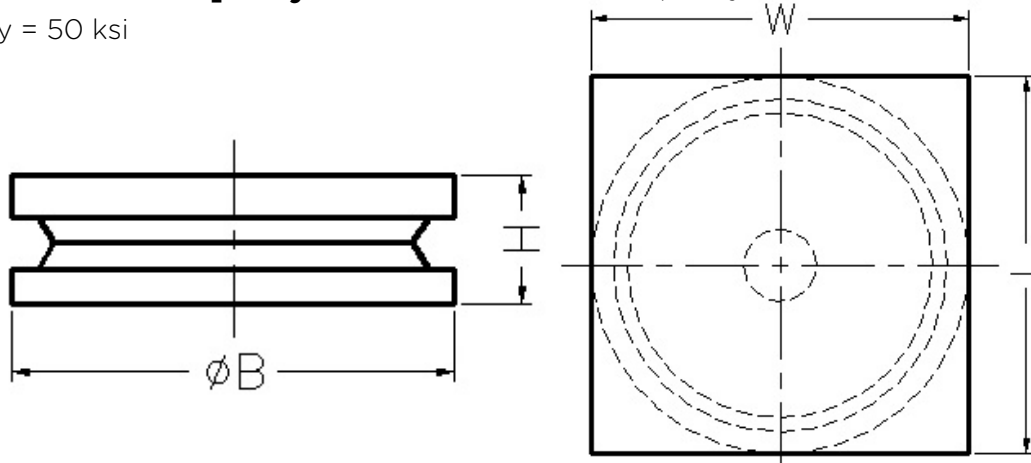
Fixed

Design Code: AASHTO 17th Edition Standard and/or LRFD Service Limit.

Rotation: ±0.02 Radians

Design Horizontal Capacity: 30% of Vertical Load Capacity

Steel: $F_y = 50$ ksi



Model Number	Vertical Load Capacity (Kips)	Horizontal Load Capacity (Kips)	Length L (inches)	Width W (inches)	Base B (inches)	Height H (inches)
DB100F	100	30	6.63	6.63	6.63	2.25
DB200F	200	60	8.63	8.63	8.63	2.76
DB300F	300	90	10.75	10.75	10.75	3.38
DB400F	400	120	12.25	12.25	12.25	3.88
DB500F	500	150	13.50	13.50	13.50	4.26
DB600F	600	180	14.75	14.75	14.75	4.75
DB700F	700	210	16.13	16.13	16.13	5.26
DB800F	800	240	17.25	17.25	17.25	5.88
DB900F	900	270	18.38	18.38	18.38	6.26
DB1000F	1000	300	19.13	19.13	19.13	6.63
DB1100F	1100	330	20.13	20.13	20.13	7.00
DB1200F	1200	360	21.00	21.00	21.00	7.13
DB1300F	1300	390	21.75	21.75	21.75	7.63
DB1400F	1400	420	22.63	22.63	22.63	7.75
DB1500F	1500	450	23.13	23.13	23.13	7.75
DB1600F	1600	480	24.00	24.00	24.00	7.81
DB1700F	1700	510	24.88	24.88	24.88	8.50
DB1800F	1800	540	25.38	25.38	25.38	8.50
DB1900F	1900	570	26.25	26.25	26.25	8.88
DB2000F	2000	600	26.75	26.75	26.75	8.88
DB2500F	2500	750	29.63	29.63	29.63	9.00
DB3000F	3000	900	32.38	32.38	32.38	9.75
DB3500F	3500	1050	35.00	35.00	35.00	10.75
DB4000F	4000	1200	37.50	37.50	37.50	11.00
DB4500F	4500	1350	39.88	39.88	39.88	12.25
DB5000F	5000	1500	41.88	41.88	41.88	12.63

- Design loads are Service loads. Contact RJW design team for bearing dimensions according to other design codes, i.e., AREMA, CAN/CSA, etc. (www.rjwatson.com/services/design-services)
- Bearing top plate can be used as the sole plate. Sole plate is designed for a welded connection to a steel girder flange or embed plate. Sole plate dimensions may vary for a bolted connection.
- Bearing dimensions are based on zero skew. Top and bottom bearing elements can be oriented at different skew angles to suit varying structure conditions.
- Design movement is the total and includes an additional +/- 1 inch for construction tolerances. Adjust slide plate dimension L if more/less movement is required.
- Masonry plate is not included. Contact RJW design team for masonry plate design assistance.