



HLMR Disk Bearing

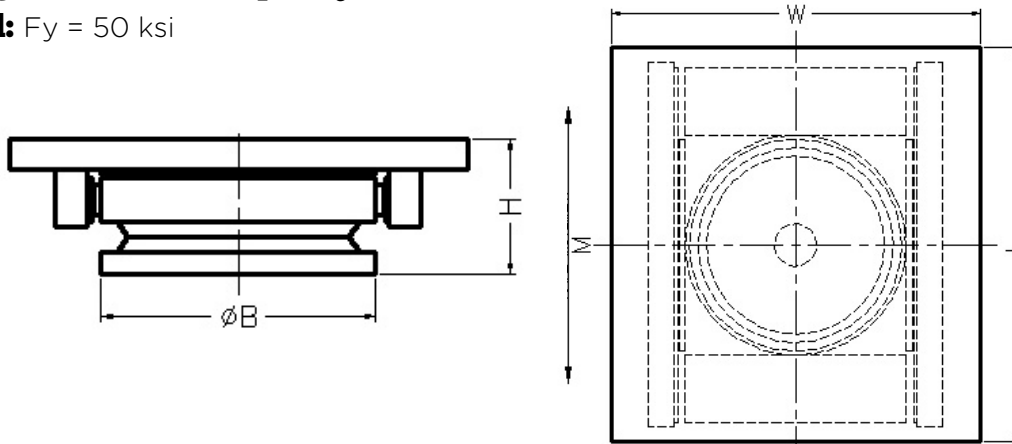
Unidirectional

Design Code: AASHTO 17th Edition Standard and/or LRFD Service Limit.

Rotation: ± 0.02 Radians

Design Horizontal Capacity: 10% of Vertical Load Capacity

Steel: $F_y = 50$ ksi



Model Number	Vertical Load Capacity (Kips)	Horizontal Load Capacity (Kips)	Length L (inches)	Width W (inches)	Base B (inches)	Height H (inches)	Movement M (inches)
DB100U	100	10	11.63	10.88	6.50	3.20	4.00
DB200U	200	20	14.25	13.50	8.38	3.45	4.00
DB300U	300	30	16.25	15.50	10.3	3.95	4.00
DB400U	400	40	18.00	17.50	11.88	4.20	4.00
DB500U	500	50	19.63	19.38	13.13	4.45	4.00
DB600U	600	60	20.88	20.88	14.25	4.57	4.00
DB700U	700	70	22.25	22.50	15.50	4.83	4.00
DB800U	800	80	23.38	24.13	16.50	5.20	4.00
DB900U	900	90	24.50	25.50	17.63	5.45	4.00
DB1000U	1000	100	25.75	27.00	18.38	5.45	4.00
DB1100U	1100	110	26.63	28.38	19.25	5.70	4.00
DB1200U	1200	120	27.50	29.25	20.25	6.07	4.00
DB1300U	1300	130	28.63	30.38	20.88	6.07	4.00
DB1400U	1400	140	29.63	31.50	22.00	6.48	4.00
DB1500U	1500	150	30.13	32.00	22.50	6.61	4.00
DB1600U	1600	160	31.25	33.13	23.25	7.11	4.00
DB1700U	1700	170	31.88	33.75	24.00	7.23	4.00
DB1800U	1800	180	32.88	34.75	24.75	7.23	4.00
DB1900U	1900	190	33.50	35.88	25.38	7.61	4.00
DB2000U	2000	200	34.50	36.88	26.13	7.61	4.00
DB2500U	2500	250	37.75	40.13	29.13	8.61	4.00
DB3000U	3000	300	40.88	43.25	31.75	8.86	4.00
DB3500U	3500	350	43.88	47.25	34.38	9.61	4.00
DB4000U	4000	400	46.39	50.75	36.63	9.86	4.00
DB4500U	4500	450	48.88	52.25	38.88	10.61	4.00
DB5000U	5000	500	51.50	58.38	40.75	11.11	4.00

- Design loads are Service loads. Contact RJW design team for bearing dimensions according to other design codes, i.e., AREMA, CAN/CSA, etc. (www.rjwatson.com/services/design-services)
- Bearing top plate can be used as the sole plate. Sole plate is designed for a welded connection to a steel girder flange or embed plate. Sole plate dimensions may vary for a bolted connection.
- Bearing dimensions are based on zero skew. Top and bottom bearing elements can be oriented at different skew angles to suit varying structure conditions.
- Design movement is the total and includes an additional +/- 1 inch for construction tolerances. Adjust slide plate dimension L if more/less movement is required.
- Masonry plate is not included. Contact RJW design team for masonry plate design assistance.